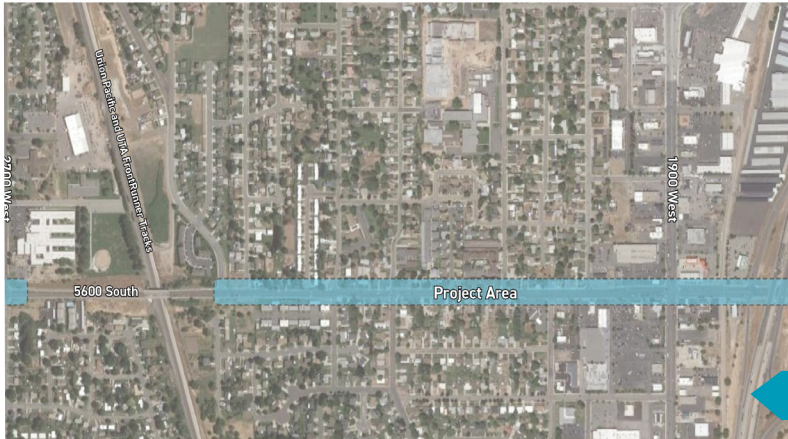




Sewer Line Pipe Replacement in Roy City

Construction on 5600 S. between 1850 W. and 2500 W. is scheduled to begin this Spring and continue into late Fall 2020.



Quick Facts

- What:** Construction of a new sewer line.
- Where:** The south side of 5600 S. between 1850 W. and 2500 W.
- When:** Construction is anticipated to start early April and continue into late Fall 2020.
- Why:** The sewer system is in poor condition and an upsized line is needed to meet the additional capacity in the area.

Project Area Map

Frequently Asked Questions

- Q** Will there be any service interruptions to water, sewer or other services during construction?
A No, water and sewer services will not be interrupted.
- Q** I live on 5600, will driveway access to my house be open?
A Yes! Contractors will work hard to maintain business and residential driveway access. There may be times where driveway access is impacted. In that case, residents and businesses will be notified 24-48 hours in advance describing where to park.
- Q** How will I be updated about construction?
A A dedicated Public Outreach Team will send out bi-weekly or weekly email updates. If you wish to be put on this list, please send an email to the contact

Background and Need

It was determined that the existing 10-inch sewer is in poor condition and does not provide the capacity needs for the population in the area. The main approach to handle the higher capacity needs for the sewer in the area is to upsize the existing line from 10-inch to 12-inch by removing and replacing with a new pipeline.

Replacing the existing sewer line ensures NDSD, Roy City, and Weber County will continue to provide reliable sewer service that their customers and residents expect.

This is part of an overall effort to upgrade and improve the sewer in Roy City. This improved infrastructure will support and foster economic development in the area.

Safety

Safety is a top priority for the North Davis Sewer District. We encourage and appreciate neighborhood participation to keep children away from the construction equipment and work areas. Parents, please talk with your children about staying away from potentially dangerous construction and watching for construction vehicles.

If you see any vandalism or trespassing in a construction area, please call the Public Outreach Hotline: 801-633-1056 to report any incidents.

Questions?

North Davis Public Outreach Team.

801-633-1056 mhurst@langdongroupinc.com

Info will be posted on NDSD's website (www.ndsd.org)



Construction Impacts and Plan of Action

While North Davis Sewer District aims to keep construction impacts as minimal as possible, some impacts are unavoidable. Residents and drivers in the area can expect:

Construction Impacts	Planned Actions to Reduce Impacts
Noise, dust, and vibrations	<ul style="list-style-type: none"> » Work hours: 7 am to 7 pm (Active construction during daylight hours) » Some noise and dust » Some night work (residents will be notified beforehand by email)
Traffic impacts	<ul style="list-style-type: none"> » One lane closed with shifted traffic » On-street parking restrictions » Side-walk restrictions » Signage » Notice
Driveway access	<ul style="list-style-type: none"> » Coordination with properties impacted
Project construction	<ul style="list-style-type: none"> » Coordination and communication with Roy City, individual residents and homeowners, commuters, and local businesses » Information posted to NDS and Roy City Websites » Project dedicated community liaison to hear and resolve any issues or complaints

Anticipated Timeline

April - May	June - July	August - September	October - November
Construction Begins at 2500 W.			Construction Concludes at 1850 W.

*The project will be completed in 1000 ft. increments.

If you would like to be updated about the project per bi-weekly emails, please send an email to mhurst@langdongroupinc.com with the subject "NDS 5600".